



**sapi med**  
Products and systems  
for coloproctology

**ARAMIS**   
transanal rectoscopic Assisted Minimally Invasive Surgery

**ARAMIS**   
transanal rectoscopic Assisted Minimally Invasive Surgery



**sapi med**  
Products and systems  
for coloproctology

Via della Chimica, 6 - Zona Ind. D3  
15121 Alessandria - Italia  
Tel. +39 0131 348109 • Fax +39 0131 348383  
info@sapimed.com • www.sapimed.com



ARAMIS


REF A.4025ST.N


**ARAMIS**   
transanal rectoscopic Assisted Minimally Invasive Surgery

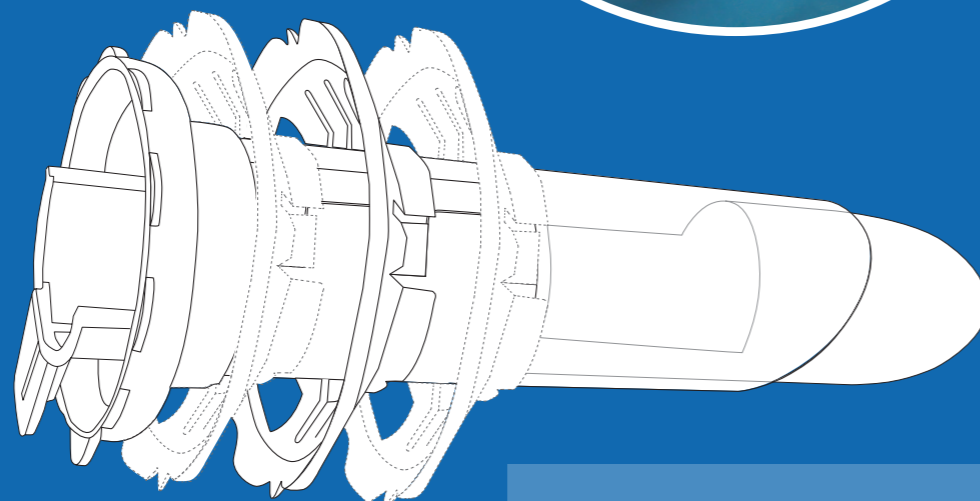
**ARAMIS** è un dispositivo chirurgico monouso dedicato alla chirurgia transanale mininvasiva delle patologie rettali quali, ad esempio, polipi, tumori del retto T1, stenosi delle anastomosi, fistole complesse.

**ARAMIS** is a disposable surgical device dedicated to the transanal minimally invasive surgery of rectal pathologies such as polyps, T1 rectal cancers, anastomotic stenosis, complex fistulas.



  
Ghiera di fissaggio,  
corsia di scorrimento  
*Locking ring, sliding track*

  
Sistema  
di blocco  
*Hooking  
system*



3 livelli di profondità  
*3 levels of depth*

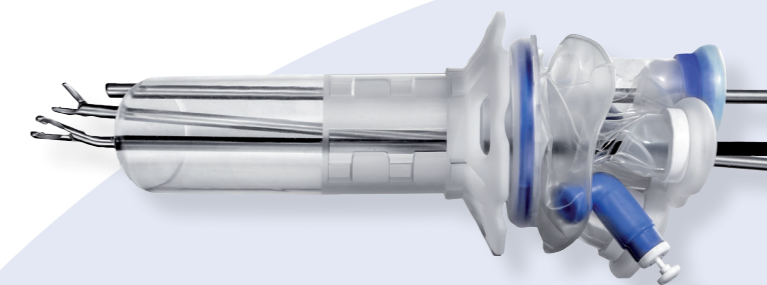


**technical features**

transanal rectoscopic Assisted Minimally Invasive Surgery

.....  
La configurazione del sistema ARAMIS  
e l'ampiezza del campo di visione consentita  
**rendono agevole il decubito del paziente  
indipendentemente dalla localizzazione  
della lesione da trattare.**

.....  
*The configuration of the ARAMIS system  
and the field of vision amplitude  
facilitate the patient's decubitus regardless  
of the location of the lesion to be treated.*



ARAMIS è utilizzabile sia con strumentazione laparoscopica standard (3-15 mm), sia con strumentazione angolata TEM.

*ARAMIS system can be both used with standard laparoscopic instrumentation (3-15 mm) and TEM angled instrumentation.*

